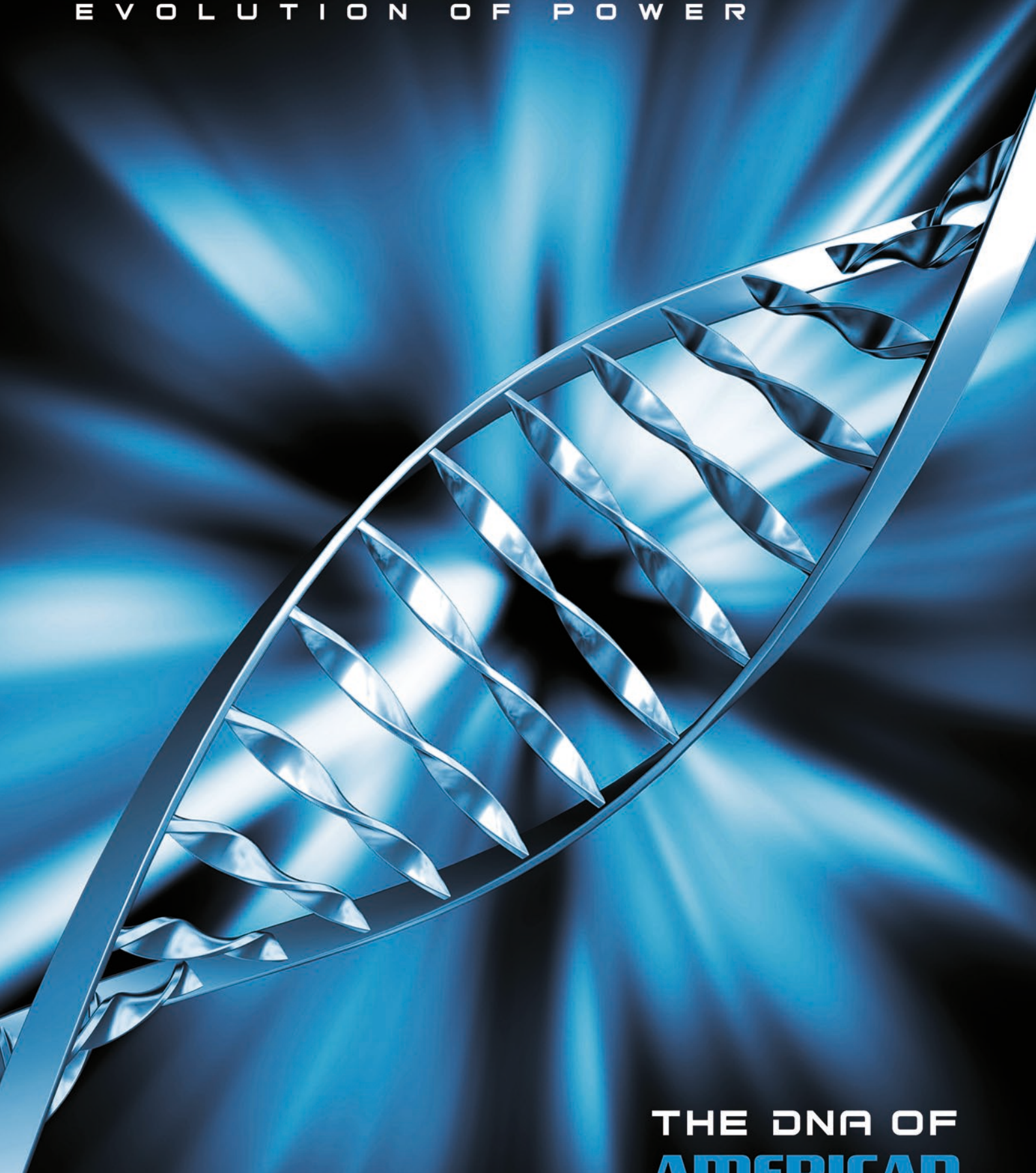


autOTEK

EVOLUTION OF POWER



THE DNA OF
AMERICAN
CAR AUDIO

TRANS AM AMPLIFIERS

TRANS AM



- 1 OHM STABLE
- MASTER/SLAVE
- BASS REMOTE
- SUBSONIC FILTER
- PHASE SHIFT

TA1800 DIGITAL MONOBLOCK



Mono Class D Amplifier
 1 x 400/600/800 Watts RMS @ 4/2/1 Ohms
 1 x 800/1200/1600 Watts MAX @ 4/2/1 Ohms
 Lowpass Filter 30 Hz - 250 Hz
 Subsonic Filter 20 Hz - 50 Hz
 Bass EQ 0 - 18 dB
 Phase Shift 0° / 180°
 Master/Slave Link-Mode
 RCA Line Outputs & Inputs
 High Level Inputs via RCA
 Bass Remote Controller
 223 x 63 x 320/346 mm



Mono Class D Verstärker
 1 x 400/600/800 Watt RMS @ 4/2/1 Ohm
 1 x 800/1200/1600 Watt MAX @ 4/2/1 Ohm
 Tiefpass Filter 30 Hz - 250 Hz
 Subsonic Filter 20 Hz - 50 Hz
 Bass EQ 0 - 18 dB
 Phasen-Schalter 0° / 180°
 Master/Slave Link-Modus
 Cinch-Ausgänge & Eingänge
 Hochpegel-Eingänge über Cinch
 Bass-Fernbedienung
 223 x 63 x 320/346 mm



- FULL RANGE MODE
- BASS REMOTE
- SUBSONIC FILTER
- PHASE SHIFT

TA1400 ANALOG MONOBLOCK



Mono Class A/B Amplifier
 1 x 225/400 Watts RMS @ 4/2 Ohms
 1 x 450/800 Watts MAX @ 4/2 Ohms
 Highpass/Subsonic Filter 15 Hz - 55Hz
 Lowpass Filter 40 Hz - 150 Hz
 Bass EQ 0 - 12 dB
 LP-BP / HP / FULL Switch
 RCA Line Outputs & Inputs
 Bass Remote Controller
 223 x 63 x 250/276 mm



Mono Class A/B Verstärker
 1 x 225/400 Watt RMS @ 4/2 Ohm
 1 x 400/800 Watts MAX @ 4/2 Ohm
 Tiefpass Filter 40Hz - 150Hz
 Hochpass/Subsonic Filter 15 Hz - 55 Hz
 Bass EQ 0 - 12 dB
 LP-BP / HP / FULL Schalter
 Cinch-Ausgänge & Eingänge
 Bass-Fernbedienung
 223 x 63 x 250/276 mm

CREATED FOR THE STREET

TA4150 ANALOG 4-CHANNEL



4-Channel Class A/B Amplifier
 4 x 75/125 Watts RMS @ 4/2 Ohms
 4 x 150/250 Watts MAX @ 4/2 Ohms
 2 x Highpass Filter 60 Hz - 1.2 kHz
 Lowpass Filter 50 Hz - 250 Hz (CH 3/4)
 Bass EQ 0/6/12 dB (CH 3/4)
 RCA Line Inputs, High Level Inputs
 Mono bridgeable (CH 3/4)
 223 x 63 x 300/326 mm



4-Kanal Class A/B Verstärker
 4 x 75/125 Watts RMS @ 4/2 Ohm
 4 x 150/250 Watt MAX @ 4/2 Ohm
 2 x Hochpass Filter 60 Hz - 1.2 kHz
 Tiefpass Filter 50 Hz - 250 Hz (CH3/4)
 Bass EQ 0/6/12 dB (CH3/4)
 Cinch-Eingänge, Hochpegel-Eingänge
 Mono brückbar (CH 3/4)
 223 x 63 x 300/326 mm



TA2150 ANALOG 2-CHANNEL



2-Channel Class A/B Amplifier
 2 x 75/125 Watts RMS @ 4/2 Ohms
 2 x 150/250 Watts MAX @ 4/2 Ohms
 Highpass Filter 60 Hz - 1.2 kHz
 Lowpass Filter 50 Hz - 250 Hz
 Bass EQ 0/6/12 dB
 RCA Line Inputs, High Level Inputs
 Mono bridgeable
 223 x 63 x 200/226 mm



2-Kanal Class A/B Verstärker
 2 x 75/125 Watt RMS @ 4/2 Ohm
 2 x 150/250 Watt MAX @ 4/2 Ohm
 Hochpass Filter 60 Hz - 1.2 kHz
 Tiefpass Filter 50 Hz - 250 Hz
 Bass EQ 0/6/12 dB
 Cinch-Eingänge, Hochpegel-Eingänge
 Mono brückbar
 223 x 63 x 200/226 mm



STREET MACHINE SUBBOXES



- ACTIVE POWERED
- AUTO TURN-ON
- BASS REMOTE
- SUBSONIC FILTER
- PHASE SHIFT

A690RXA ACTIVE SUBBOX



- 6 x 9er (15 x 23 cm) Subwoofer
- 300 Watts Max.
- Gain Controller, Lowpass 50 - 150 Hz, Bass Boost 0-12dB @ 45 Hz
- Subsonic 25 Hz fixed, Phase Switch 0 / 180°
- RCA Inputs, High Level Inputs, Auto Turn-On
- Detachable Connectors, Bass Remote Controller
- Compact Enclosure with Logo-Embroidery
- Dimensions: 455 x 285 x 270/230 mm



- 6 x 9er (15 x 23 cm) Subwoofer
- 300 Watt Max,
- Gain-Regler, variabler Tiefpass 50 - 150 Hz, Bass Boost 0-12dB @ 45 Hz
- Cinch-Eingänge, Hochpegel-Eingänge, Autom. Einschaltfunktion
- Subsonic 25 Hz fix, Phasenschalter 0 / 180°
- Abnehmbare Anschluss-Stecker, Bass-Fernbedienung
- Kompaktes Gehäuse mit Logosticks
- Abmessungen: 455 x 285 x 270/230 mm

POWER UP YOUR TRUNK



A690RX SINGLE BASSREFLEX

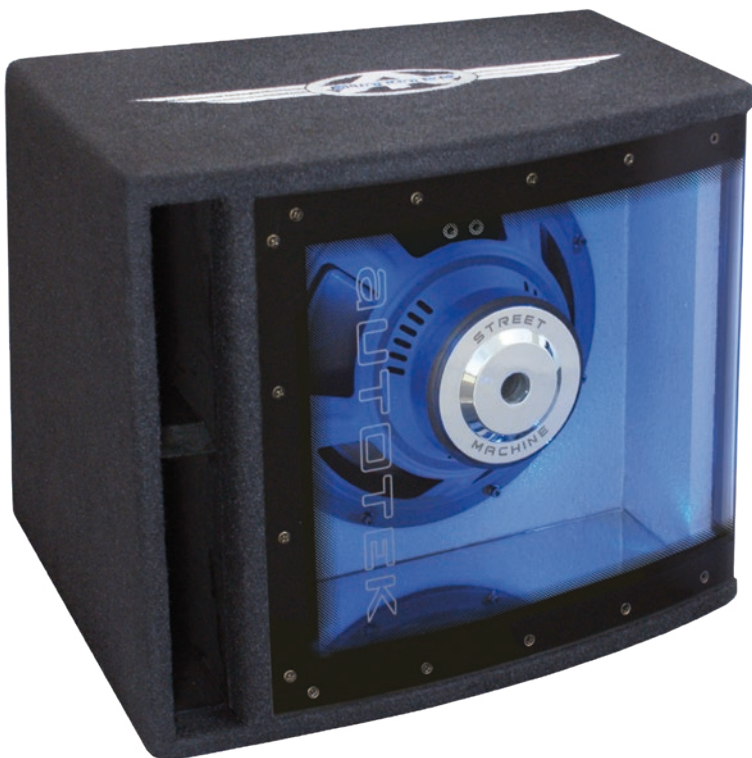


- 6 x 9er (15 x 23 cm) Subwoofer
- 200 Watts RMS, 400 Watts Max., Impedance 4 Ohms
- Compact Enclosure with Logo-Embroidery
- Dimensions: 455 x 285 x 270/230 mm



- 6 x 9er (15 x 23 cm) Subwoofer
- 200 Watts RMS, 400 Watts Max., Impedance 4 Ohms
- Kompaktes Gehäuse mit Logosticks
- Abmessungen: 455 x 285 x 270/230 mm

READY FOR THE BOOM



A250BP SINGLE BANDPASS



- 25 cm (10") Subwoofer with 50 mm Voice Coil
- 250 Watts RMS, 500 Watts Max., Impedance 4 Ohms
- Blue LED-Illumination, Logo-Embroidery
- Dimensions: 410 x 340 x 390/310 mm



- 25 cm (10") Subwoofer mit 50 mm Schwingspule
- 250 Watt RMS, 500 Watt Max., Impedanz 4 Ohm
- Blaue LED-Beleuchtung, Logostick
- Abmessungen: 410 x 340 x 390/310 mm

ATX SPEAKERS



ATX6.2C COMPONENT SPEAKERS



- 16,5 cm 2-Way-Component-System
- 100 Watts RMS, 200 Watts Max., Impedance 4 Ohms
- 6 db In-line-Crossover, 20 mm Silk-Dome-Tweeter
- Frequency Response 60 Hz - 22 KHz
- Mounting Depth 44 mm, Mounting Hole 144 mm



- 16,5 cm 2-Wege-Komponenten-System
- 100 Watt RMS, 200 Watt Max., Impedanz 4 Ohm
- 6dB In-line-Kabel-Frequenzweiche, 20 mm Gewebe-Hochtöner
- Frequenzgang 60 Hz - 22 KHz
- Einbautiefe 44 mm, Einbauöffnung 144 mm

ATX6.2W KICKBASS SPEAKERS



- 16,5 cm Kickbass-Speakers
- 100 Watts RMS, 200 Watts Max., Impedance 4 Ohms
- Frequency Response 60 Hz - 3000 Hz
- Mounting Depth 44 mm, Mounting Hole 144 mm



- 16,5 cm Kickbass-Lautsprecher
- 100 Watt RMS, 200 Watt Max., Impedanz 4 Ohm
- Frequenzgang 60 Hz - 3000 Hz
- Einbautiefe 44 mm, Einbauöffnung 144 mm



ATX693 TRIAXIAL SPEAKERS



- 15 x 23 cm (6 x 9er) 3-Way-Triax-System
- 150 Watts RMS, 300 Watts Max., Impedance 4 Ohms
- Frequency Response 46 Hz - 22 KHz
- Mounting Depth 75 mm, Mounting Hole 151 x 220 mm



- 15 x 23 cm (6 x 9er) 3-Way-Triax-System
- 150 Watts RMS, 300 Watts Max., Impedance 4 Ohms
- Frequency Response 46 Hz - 22 KHz
- Mounting Depth 75 mm, Mounting Hole 151 x 220 mm

A62CX COAXIAL SPEAKERS



- 16.5 cm 2-Way-Coax-System
- 100 Watts RMS, 200 Watts Max. Impedance 4 Ohms
- Frequency Response 60 Hz - 22 KHz
- Mounting Depth 44 mm, Mounting Hole 144 mm



- 16.5 cm 2-Wege-Koax-System
- 100 Watt RMS, 200 Watt Max. Impedanz 4 Ohm
- Frequenzgang 60 Hz - 22 KHz
- Einbautiefe 44 mm, Einbauöffnung 144 mm



ATX572 COAXIAL SPEAKERS



- 13 x 18 cm 2-Way-Coax-System
- 90 Watts RMS, 180 Watts Max., Impedance 4 Ohms
- Frequency Response 63 Hz - 22 KHz
- Mounting Depth 53 mm, Mounting Hole 128 x 182 mm



- 13 x 18 cm 2-Wege-Koax-System
- 90 Watt RMS, 180 Watt Max., Impedanz 4 Ohm
- Frequenzgang 63 Hz - 22 KHz
- Einbautiefe 53 mm, Einbauöffnung 128 x 182 mm



A52CX COAXIAL SPEAKERS



- 13 cm 2-Way-Coax-System
- 80 Watts RMS, 160 Watts Max., Impedance 4 Ohms
- Frequency Response 65 Hz - 22 KHz
- Mounting Depth 50 mm, Mounting Hole 115 mm



- 13 cm 2-Wege-Koax-System
- 80 Watt RMS, 160 Watt Max., Impedanz 4 Ohm
- Frequenzgang 65 Hz - 22 KHz
- Einbautiefe 50 mm, Einbauöffnung 115 mm



ATX462 COAXIAL SPEAKERS



- 10 x 15 cm 2-Way-Coax-System
- 70 Watts RMS, 140 Watts Max., Impedance 4 Ohms
- Frequency Response 70 Hz - 22 KHz
- Mounting Depth 42 mm, Mounting Hole 90 x 144 mm



- 10 x 15 cm 2-Wege-Koax-System
- 70 Watt RMS, 140 Watt Max., Impedanz 4 Ohm
- Frequenzgang 70 Hz - 22 KHz
- Einbautiefe 42 mm, Einbauöffnung 90 x 144 mm

A42CX COAXIAL SPEAKERS



- 10 cm 2-Way-Coax-System
- 60 Watts RMS, 120 Watts Max., Impedance 4 Ohms
- Frequency Response 75 Hz - 22 KHz
- Mounting Depth 43 mm, Mounting Hole 94 mm



- 10 cm 2-Wege-Koax-System
- 60 Watt RMS, 120 Watt Max., Impedanz 4 Ohm
- Frequenzgang 75 Hz - 22 KHz
- Einbautiefe 43 mm, Einbauöffnung 94 mm



ATX32 COAXIAL SPEAKERS



- 8,7 cm 2-Way-Coax-System
- 45 Watts RMS, 90 Watts Max., Impedance 4 Ohms
- Frequency Response 80 Hz - 22 KHz
- Mounting Depth 40 mm, Mounting Hole 80 mm



- 8,7 cm 2-Wege-Koax-System
- 45 Watt RMS, 90 Watt Max., Impedanz 4 Ohm
- Frequenzgang 80 Hz - 22 KHz
- Einbautiefe 40 mm, Einbauöffnung 80 mm



ATX1200CAP POWER CAP



- 1.2 Farad Power Capacitor
- Operation Voltage 12 - 16 V DC, Operation Temperature -20 ~ 60° C
- Digital Voltmeter with 4 Digits, Auto Turn On Function
- Sturdy Acrylic Holders, Dimensions: Ø 7,4 cm x 26 cm



- 1.2 Farad Pufferkondensator
- Betriebsspannung 12 - 16 V DC, Betriebstemperatur -20 ~ 60° C
- Digitale Voltanzeige mit 4 Stellen, Automatische Einschaltfunktion
- Stabile Acryl-Halterungen, Abmessungen: Ø 7,4 cm x 26 cm



AT10KIT AMPLIFIER WIREKIT



- 1 x 10 mm² Power Wire (red), 5 m
- 1 x 10 mm² Ground Wire (grey), 0.8 m
- 1 x RCA Stereo Audio Cable (blue), double shielded, 5 m
- 1 x 0,5 mm² Remote Wire, 5 m
- 1 x Mini-ANL/AFS Fuseholder with 40 A Fuse



- 1 x 10 mm² Stromkabel (rot), 5 m
- 1 x 10 mm² Massekabel (grau), 0.8 m
- 1 x Cinch Stereo Audio Kabel (blau), doppelt abgeschirmt, 5 m
- 1 x 0,5 mm² Steuerleitung, 5 m
- 1 x Mini-ANL/AFS Sicherungshalter mit 40 A Sicherung



AT20KIT AMPLIFIER WIREKIT



- 1 x 20 mm² Power Wire (red), 5 m
- 1 x 20 mm² Ground Wire (grey), 0.8 m
- 1 x RCA Stereo Audio Cable (blue), double shielded, 5 m
- 1 x 0,5 mm² Remote Wire, 5 m
- 1 x Mini-ANL/AFS Fuseholder with 60 A Fuse



- 1 x 20 mm² Stromkabel (rot), 5 m
- 1 x 20 mm² Massekabel (grau), 0.8 m
- 1 x Cinch Stereo Audio Kabel (blau), doppelt abgeschirmt, 5 m
- 1 x 0,5 mm² Steuerleitung, 5 m
- 1 x Mini-ANL/AFS Sicherungshalter mit 60 A Sicherung

